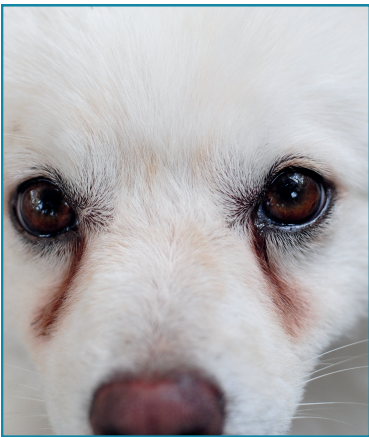


# HOW TO USE OCRYL<sup>®</sup>



## TEAR STAIN REMOVAL

- Soak a cotton pad and apply to affected area(s) twice daily for **7–14 days**.
- Continue use 1–2 times per week as needed for maintenance.
- **Consistency is key!** For best results use as directed.

## EYE RINSE

- Squeeze drops directly onto the eye or soak a cotton pad.
- Gently wipe to clean away gunk, crust, and tear stains.
- Use once daily to gently rinse away dust, debris, and discharge. For pets prone to eye buildup or irritation, you can safely use it 2–3 times per week or as needed.



Questions? Contact our technical veterinarians at [tech-vet.us@domespharma.com](mailto:tech-vet.us@domespharma.com)

**D&P** | DÔMES  
PHARMA